

**First Reading: July 11, 2017**  
**Second Reading: July 18, 2017**

2017-077  
Craig Kronenberg, Wheelhouse Holdings, and  
Nathan Smith  
District No. 8  
Planning Version

ORDINANCE NO. 13202

AN ORDINANCE TO AMEND CHATTANOOGA CITY CODE, PART II, CHAPTER 38, ZONING ORDINANCE, SO AS TO REZONE PROPERTIES LOCATED AT 1216 AND 1220 EAST MAIN STREET, MORE PARTICULARLY DESCRIBED HEREIN, FROM M-1 MANUFACTURING ZONE TO UGC URBAN GENERAL COMMERCIAL ZONE.

---

SECTION 1. BE IT ORDAINED BY THE CITY COUNCIL OF THE CITY OF CHATTANOOGA, TENNESSEE, That Chattanooga City Code, Part II, Chapter 38, Zoning Ordinance, be and the same hereby is amended so as to rezone properties located at 1216 and 1220 East Main Street, more particularly described herein:

Lots 1 and 2 Wheelhouse subdivision in Plat Book 101, Page 146, ROHC and described in Deed Book 10593, Pages 754 and 757, ROHC. Tax Map Nos. 146P-K-018, 018.01.

and as shown on the maps attached hereto and made a part hereof by reference, from M-1 Manufacturing Zone to UGC Urban General Commercial Zone.

SECTION 2. BE IT FURTHER ORDAINED, That this Ordinance shall take effect two (2) weeks from and after its passage.

Passed on second and final reading: July 18, 2017

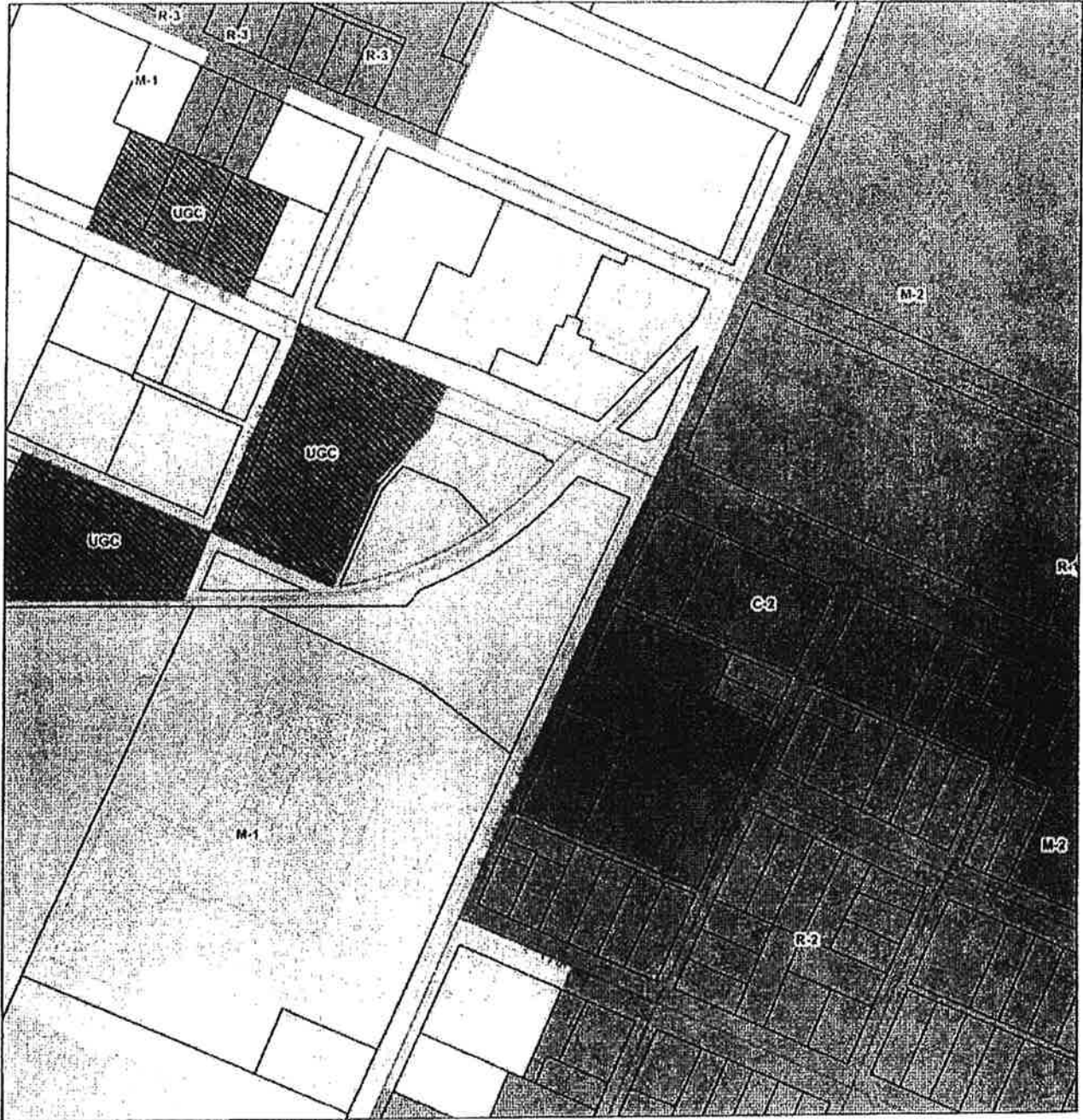
  
\_\_\_\_\_  
CHAIRPERSON

APPROVED:  DISAPPROVED:

\_\_\_\_\_  
  
MAYOR

/mem

2017-0077 Rezoning from M-1 to UGC



1:2,257

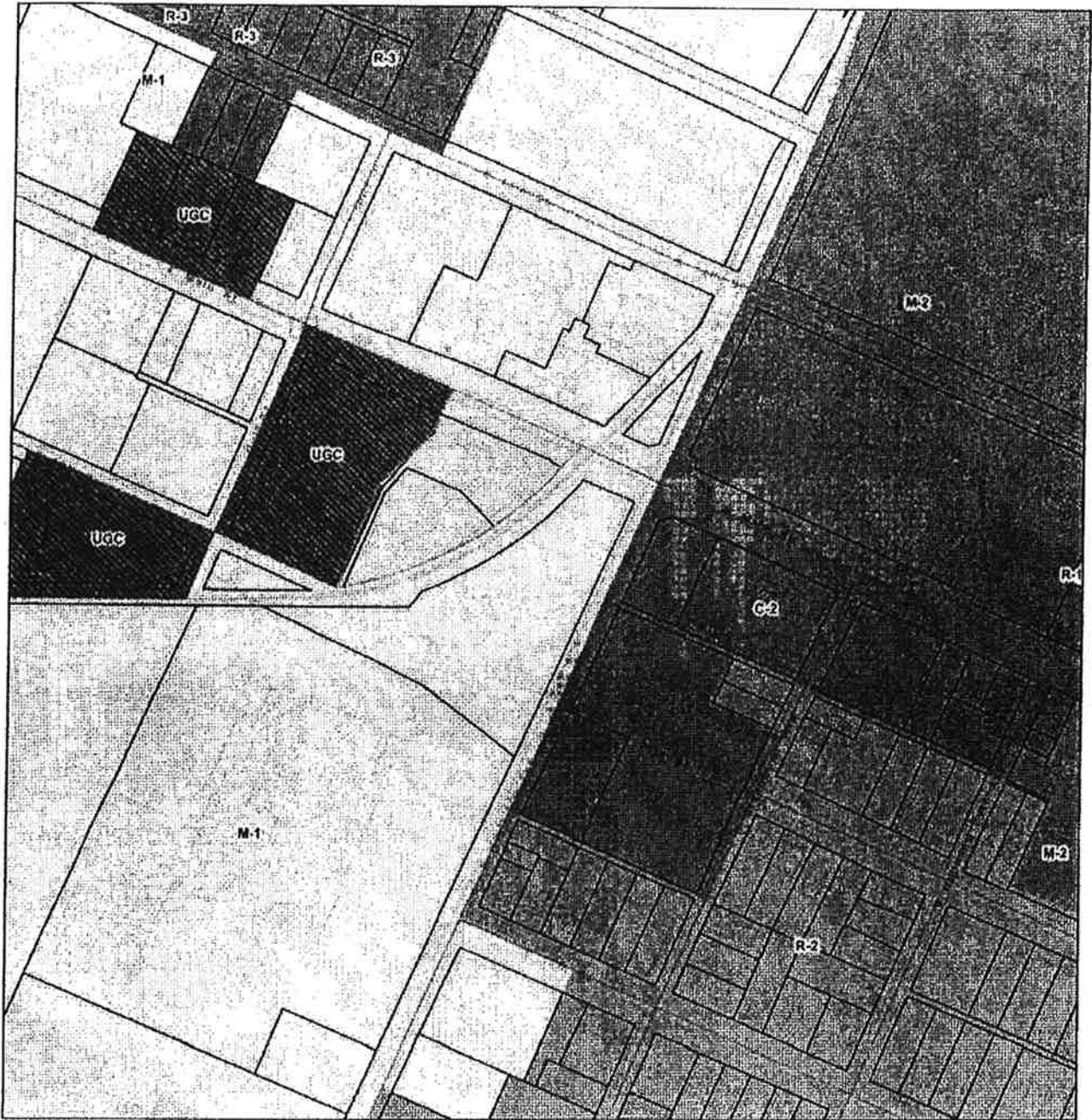
PLANNING COMMISSION RECOMMENDATION FOR CASE NO. 2017-077: Approve.

2017-0077 Rezoning from M-1 to UGC



1:2,257

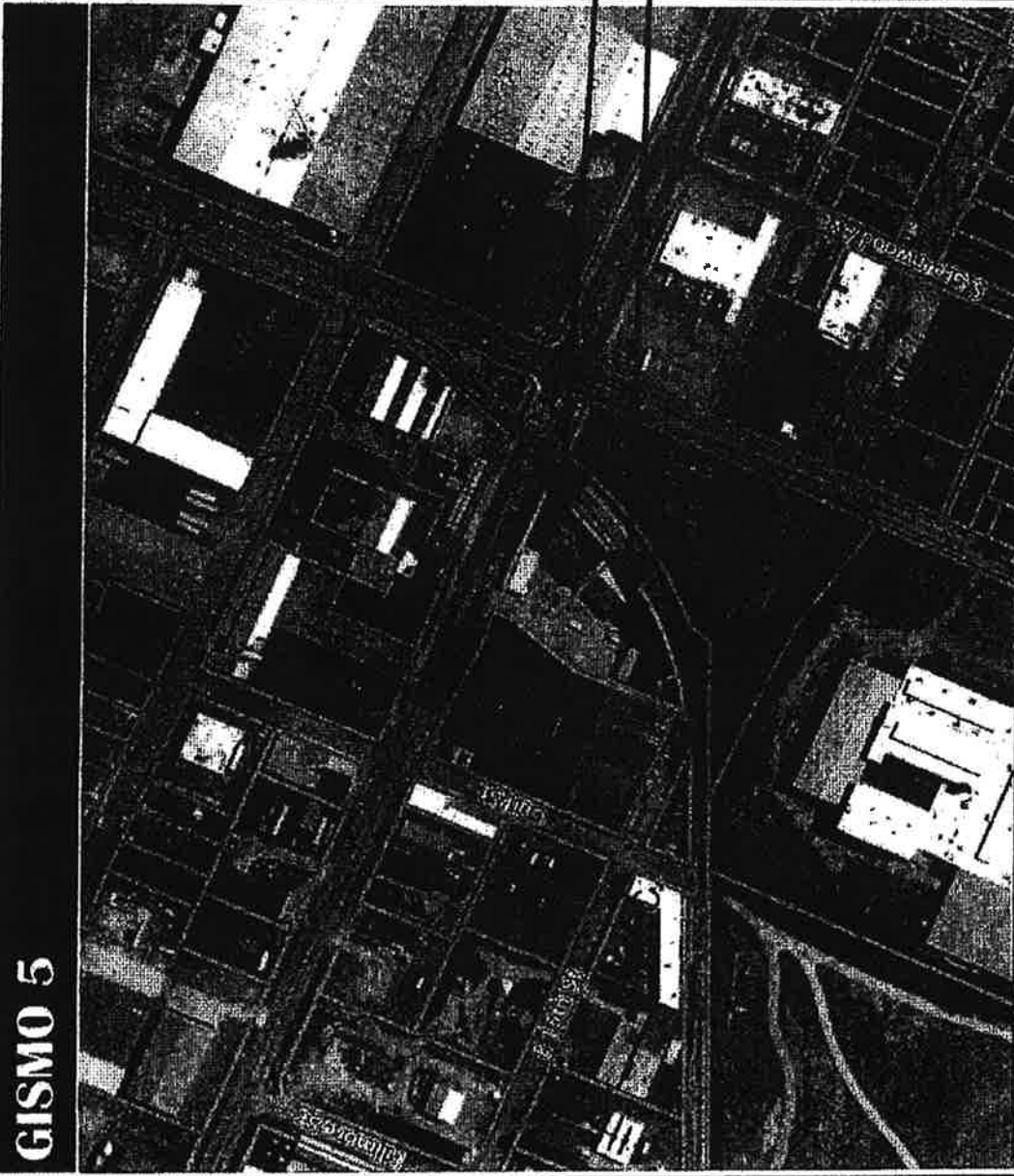
2017-0077 Rezoning from M-1 to UGC



1:2,257



**GISMO 5**



**Legend**  
□ Parcels

Request for Change  
of Zone for 1216 E  
Main Street and 1222  
East Main Street

1216 E  
Main St  
1222 E  
Main St

APR 24 2017

Disclaimer: This map is to be used for reference only, and no other use or reliance on the same is authorized. This map was automatically generated using MCGIS Mapping System. Parcel lines are shown for reference only and are not intended for conveyance; nor is it intended to substitute for a legal survey or property abstract.

0 200.00 400.00 Feet  
NAD 1983\_StatePlane\_Tennessee\_FIPS\_4100\_Feet  
© Latitude Geographic Group Ltd.

2017-017